



### CX 20 PRO

#### SPECIFICATIONS

Length <b>20' 4"</b>	Beam <b>96"</b>	Max Horsepower <b>250 HP</b>	Dry Weight (Without engines) <b>2,000 LBS</b>	Livewell Capacity <b>44 GAL</b>	Fuel Capacity <b>50 GAL</b>	Length on Trailer (Motor down, tongue swung in) <b>23' 9"</b>
Width on Trailer <b>102"</b>	Port Rod Box Length <b>8'</b>	Center Rod Box Length <b>8'</b>	Starboard Rod Box Length <b>8'</b>	Front Deck Length <b>6' 9"</b>	Front Deck Width (Widest) <b>6' 7"</b>	

**W**ith the challenges and demands of today's tournament angler, Earl Bentz has raised the bar even further from his long history of boating industry firsts with the innovations put into the CX 20 Pro.

The manufacturing team for the CX 20 Pro is the most talented group of boat-builders Earl has ever assembled. The CX 20 Pro takes the already tournament-ready bass boat to the next level by incorporating equipment that is desired by the most serious tournament anglers.

We are talking about pro upgrades such as Oxygen Innovations in the livewell systems, a Lowrance Ghost trolling motor, two 9" Lowrance HDS Live Units, and more to accompany the existing features of the tournament bass boat, including a revolutionary hull design with a 17" running pad and industry-first Hi-Speed pickup (optional).

Caymas is setting a new standard for excellence in manufacturing quality. Check out the CX 20 Pro at your closest dealer today!



\*Pictured boats may have optional equipment

## INNOVATION BECOMES DOMINATION

#### PRO MODEL FEATURES:

- Lowrance Ghost 47" trolling motor
- Lowrance® HDS 9 LIVE at bow
- Lowrance® HDS 9 LIVE at console
- Lowrance® 2-IN-1 Active Imaging
- Lowrance Point-1 antenna
- NEMA harness
- Ethernet cable
- Oxygen Innovations livewell system
- Keel protection
- Custom boat cover
- Dual disc brake upgrade on trailer



#### CONSTRUCTION

- Limited lifetime hull warranty
- Three (3) year limited component warranty
- 100% composite construction—no wood
- Tri-core composite transom
- High performance resin and barrier coat
- Hull hand laid fiberglass construction
- Zero-flex fully foamed stringer system
- Premium gelcoat with UV inhibitors
- Plumbing and electrical systems factory tested

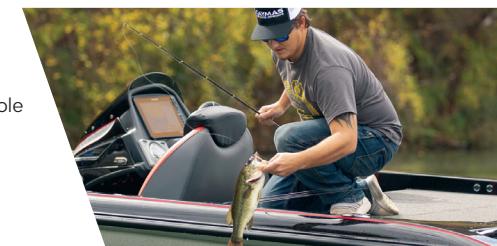
#### FISHING FEATURES

- Two (2) independent high capacity rear insulated livewells
- Two (2) 800 gph livewell aerator pumps
- Two (2) 800 gph livewell recirculation pumps
- Two (2) 800 gph livewell pump-out pumps
- Livewell timer
- Livewell overflow system
- One (1) bike seat and pro-pole
- One (1) fold-down fishing seat
- Two (2) front deck seat locations
- Three (3) retractable rod buckles—two (2) at bow, one (1) at rod ramp
- Front deck tool and pliers organizer with cup holder
- 6-gauge trolling motor harness
- 10-gauge clean power harness for electronics
- Oversized bow trim switch buttons for easy foot operation
- Deck recess for trolling motor foot pedal
- Built-in fish measuring board with tool holder
- Fully finished fiberglass boxes throughout with custom mats
- LED compartment lights
- LED livewell lights
- Stainless steel bilge and livewell discharge plate
- Passenger side rod ramp
- Passenger footrest with integrated tackle/storage drawer
- Locking oversized storage boxes
- Folding fish net with custom holder
- Center bow rod box with tackle organizing system



#### SAFETY AND QUALITY

- Automatic bilge pump
- Electric bilge pump
- Finished bilge compartment with access doors to pumps and batteries
- Built-in LED bow navigation lights
- Removable LED stern light
- Custom digital switching with tinned wiring
- Horn
- Non-skid aft step mat
- Non-skid bow step mat
- Plexiglass tinted removable windshield—two (2) on dual console
- Recessed retractable boarding ladder
- Stainless steel boarding grab handle
- Retractable passenger grab handle
- Stainless steel passenger grab handle
- Hot Foot throttle
- LED cockpit courtesy light
- SeaStar hydraulic steering
- Tilt steering wheel
- Custom polished aluminum jackplate
- Waterproof stainless steel compartment latches
- Stainless steel bow and stern pull-up cleats



#### COMFORT AND CONVENIENCE

- Custom color selection for entire boat and upholstery
- Custom suspension driver and passenger bucket seats with adjustable slides
- Surf Turf cockpit flooring
- Stainless steel prop
- AGM cranking battery
- Fully padded front deck including lids
- Custom steering wheel
- Dual Pro 4 x 15 battery charger
- Center console storage with fiberglass lid
- Driver's console with extended leg room
- Custom 5" digital gauge with data display
- Lid pistons on storage and rod boxes
- Stainless steel bow and transom eyes
- Turn-signal trim on steering wheel (single)
- Fully insulated built-in ice chest with custom Surf Turf mat
- Four (4) stainless steel drink holders in cockpit
- Plush 24 oz carpet with edge trim
- Remote drain plug
- Trolling motor battery trays
- Chrome fuel fill

#### TRAILER FEATURES

- Tandem axle with disc brakes on both axles
- Channel frame with custom fitted bunks
- Custom 14" aluminum wheels and balanced radial tires with matching spare tire
- Vault Hubs with 10 year limited warranty
- Swing tongue
- Dutton-Lainson Winch and jack
- Ratchet trailer tie downs
- Seven pin trailer plug
- Easy-step oversized bow step pad
- Aluminum diamond-plate tread for front and rear step pads
- Caymas lighted step pads
- LED waterproof tail, marker, and reverse lights
- Rock Guard polyurea with clearcoat protective finish
- Custom pin stripe to match boat